



ÜSTÜNKARLI

LOG SAWING LINES

www.ustunkarli.com

TURN-KEY PROJECT SOLUTIONS

ÜSTÜNKARLI is proud of sharing its know-how and experience in saw milling industry with its customers for nearly 60 years. With experienced sales department, after sale service and expert installation team; ÜSTÜNKARLI proved its reliability by countless projects in saw milling market all around the world.

Complete saw milling lines and countless machines supplied and are working in the countries from Asia, Africa and Europe such as;

Germany, France, Sweden, England, Spain, Hungary, Slovenia, Czech Republic, Poland, Romania, Russia, Greece, Albania, Bulgaria, Estonia, Ivory Coast, Cameroon, Latvia, Lithuania, Malaysia, Peru, Croatia, Iran, Serbia, Saudi Arabia, Macedonia, Jordan, Italy, Netherlands, Ukraine and many more...



Üstüncarlı has the right of change the details in this catalogue without a notice.



- Extra thick steel frame, special alloy hard cast iron crowned fly wheels
- The linear bearing and tensioning system at the upper flywheel will respond faster and accurately to the changes of saw blade tensioning
- Hydraulic system saw blade clearance provides higher stabilization and faster cutting speed . (Saw guides are pushed forward the blade automatically during the cut; and pulled backward while carriage comes back instead of taking backwards the headblocks when carriage comes back) (optional)
- Saw blade guide up & down control provides by hydraulic or electromotor and brake system is applied by hydraulic or pneumatic
- Upper wheel inclination by manually or automatically
- Safety covers for saw blade and upper wheel and emergency switches
- Scoring unit. The scoring unit is cleaning the way of blade onto the log that provides long working life of blade (optional)
- Driven roller or chain transfer system on main body for removing the cut pieces
- Manual saw blade clearance by diesel oil tank (optionally automatic)
- Manual lubrication

BAND SAWS

UHM 120/M | UHM 120/H | UHM 140/H | UHM 160/H



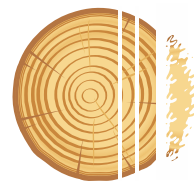
SCORING UNIT

The scoring unit is cleaning the way of saw blade onto the log. Hydromotor controlled scoring unit provides sharpen cutting surface and as lengthen life of saw blade.



TANDEM HYDRAULIC VERTICAL BAND SAWS

UHM 120/H-T | UHM 140/H-T



- TANDEM BAND SAWS provides 1 slab-1 board or 2 boards at the single cutting
- The main body of movable band saw is located on heavy chase and moves on linear guides. The movement and positioning provided by electro motor (Servo motor is also available as an optional)
- The second band saw is fixed. The thickness of boards are controlled by 2-3 axis digital
- Hydraulic system saw blade clearance provides higher stabilization and faster cutting speed (Saw Guides are pushed forward the blade automatically during the cut; and pulled backward while carriage comes back instead of taking backwards the headblocks when carriage comes back) (optional)
- Driven roller or chain transfer system on main body for removing the cut pieces (for UHM 120/H-T and 140/H-T)

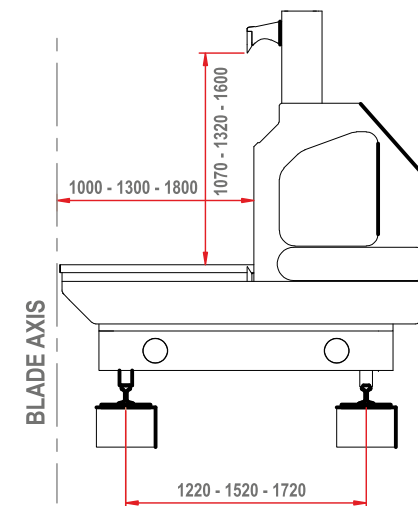


- Comfortable, easy to use, operator friendly remote control
- Manufactured from 200 mm I-beams. Heavy and strong mainframe. (7700 upto 9500 kgs)
- Independent horizontal hooks movement for easier positioning of logs (optional)
- Fixed fence-horizontal movable hooks. The distance between fence and hooks can be adjusted do desired position min: 35-145 mm. As an optionally 15-145 mm
- 2 set of joysticks with six button each to control headblocks, hooks and turning arms and 1 set of hydraulic pedal for carriage forward backward movement (optional for advance models)
- Each of the hydraulic system centrifugal turning arm has 1000 kg lift capacity. Turning arms inclination up to 90°, rotation by electric motor
- Chains of turning devices are driven by reducer
- Log holding steel bars that protect the headblock guides getting damage by log and make the log to be turned easily
- Electronic thickness gauging system manufactured and designed by ÜSTÜNKARLI, has the possibility of remaining and outgoing thickness gauging, 8 memories and entering values directly, 50 programs for different diameter or width, optimization between 50 programs, possibility of instant programing manually and 5 different groups between 50 programs
- Automatic central lubrication

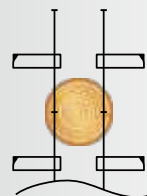


LOG CARRIAGES / UTA N | UTA NH

- Hydraulic feeding speed up to 0-85 m/min with steel rope drive system. Hydraustatic feeding system with the speeds of 0-120, 0-160, 0-200 m/min (optional)
- Special tensioning system that ensures lengthen life for steel rope
- Speed of headblocks is 0-200 mm/sec. provided by AC driven (0-320, 0-500 mm/sec. optional)
- Wheels of carriage are disguised into main body to prevent from the sawdust gathering on the rails, (273 mm trapeze / 260 mm flat)
- A special carriages for African Type Logs are produced upon request of customers



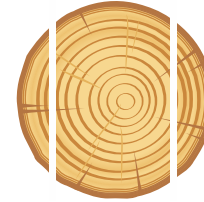
- Extra thick steel frame
- Electronic automatic setting system for thickness of prisma and 6 memories button
- Hydraulic infeed upper pressing rollers
- Clawed chain conveyor system for continuous log feeding
- Adjustable electric motor and speed control feeding up to 0 - 43 m/min. continuously
- Operator control desk
- Cutting with 4 pieces 600 mm circular saw, 2 slabs can be taken from the log (UDKTY/4)
- Cutting with 8-12-16 pieces 600 mm circular saws, can be taken 2 slabs, 2-4-6 boards from the log (UDKTY/4 - 16)
- Outfeed conveyor with pneumatic side pressing rollers to separate of slab and board (UDKTY/4 - 16)
- Log diameters 150 mm-400 mm



UDKTY/4-4

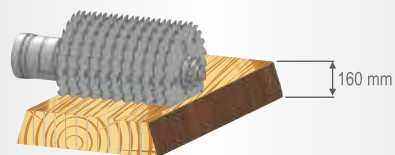

 UDKTY/4-8
 UDKTY/4-12
 UDKTY/4-16

PRISMA MACHINE / UDKTY / 4

- Extra thick steel frame, special alloy cast iron crowned fly wheels
- Saw blade tension controlled by pneumatic system
- Saw blade guide up and down movement manually
- Upper wheel inclination manually
- Electronic gauging system for thickness gauging and 6 memory buttons
- High efficiency movement system with linear guides on movement of band saws
- Pneumatic / upper pressing rollers
- Pneumatic / side pressing rollers for slabs
- Adjustable feeding speed up to 0-43 m/min continuously
- Log diameters 150 mm-500 mm
- Manuel lubrication
- Diesel oil tank for blade cleaning
- Operator control desk

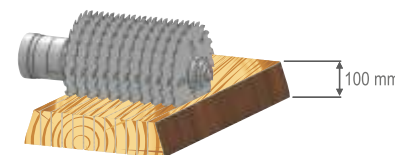
- Extra thick steel frame
- Special alloy hardened and grinded steel axe
- Manual blade height adjustment depend on selected blade diameter
- Cutting hight adjustment by electric motor
- Pneumatic upper rollers
- Special cast iron palet chain feding system with nails which protect to bentng while a cutting for accurate cutting surface
- Adjustable feed speed up to 0 - 40 m/min continuously
- Safety metal covers and anti-kickback fingers
- Automatic lubrication
- Pneumatic pressing rollers at the infeed provide to smooth feding and 3 tracking rollers at the bottom



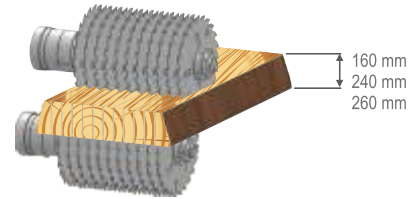
MULTIPLE RIP SAWS
UDKP 160

MULTIPLE RIP SAWS
UDKP 100

- Extra thick steel frame
- Special alloy hardened and grinded steel axe
- Manual blade height adjustment depend on selected blade diameter
- Manual cutting height adjustment
- Spring pressured upper rollers
- Special cast iron palet chain feding system with nails which protect to bentng while a cutting for accurate cutting surface
- Manual lubrication



- Extra thick steel frame
- Special alloy hardened and grinded steel axes
- Digital up and down adjustment axes by electric motors according to the cutting height
- Digital adjustment up and down upper spring pressure rollers (UDKD 160)
- Upper pneumatic pressure rollers by electric motor according to the cutting depth (UDKD 240)
- Special cast iron palet chain feeding system with nails which protect to bending while a cutting for accurate cutting surface
- Adjustable feed speed up to 0 - 40 m/min continuously
- Pneumatic pressing rollers at the infeed provides to smooth feeding and 3 tracking rollers at the bottom
- Safety metal covers and anti-kickback fingers
- Automatic centralized lubrication
- 600 mm cutting width for wide boards (just for UDKD 260)
- 1000 working width on 250 mm thickness (only for UDKD 260)

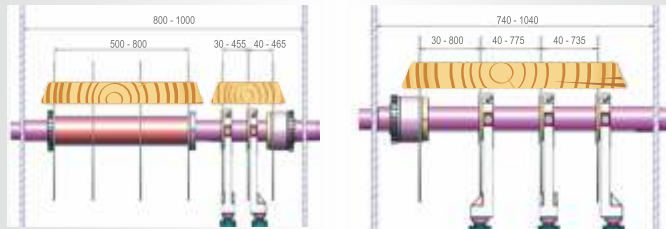


MULTIPLE RIP SAWS / UDKD 160 | UDKD 240 | UDKD 260



Extra thick steel frame

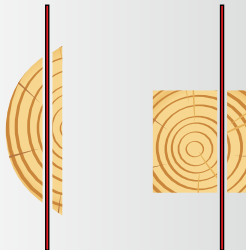
- Special alloy hardened and grinded steel axe
- Hydraulic motor driven upper and lower feeding rollers
- Upper pressure rollers
- Adjustable feeding speed up to 0 - 65 m/min continuously
- 1 fixed and 2 separately movable blades are driven by hydraulic cylinder
- Additional movable blade (optional)
- 160 mm cutting height possibility (optional, UDKY/D 500 - 160)
- Electronic thickness gauging system for thickness gauging and 6 memory button (optional)
- Safety metal covers and anti-kickback fingers
- Manuel lubrication
- Digital control of the distance between movable saws (UDKY/D 500 - UDKY/D 800)



PARALLEL BOARD EDGERS / UDKY 500 | UDKY 800



- Extra thick steel frame, special alloy cast iron crowned fly wheel
- Saw blade tensioning by electric motor
- Saw blade tensioning by automatic hydraulic system for stability of saw blade tension (UYM 120/H)
- Hydraulic system saw blade guide up and down movement
- Upper wheel inclination manually
- Upper wheel inclination by electrical motor (UYM 120/H)
- Safety covers for saw blade and upper wheel
- Adjustable hydraulic system feeding speed up to 0 - 65 m/min
- Electronic thickness gauging system for thickness gauging and 6 memory button (6 memories)
- Manual lubrication
- Diesel oil tank for blade cleaning



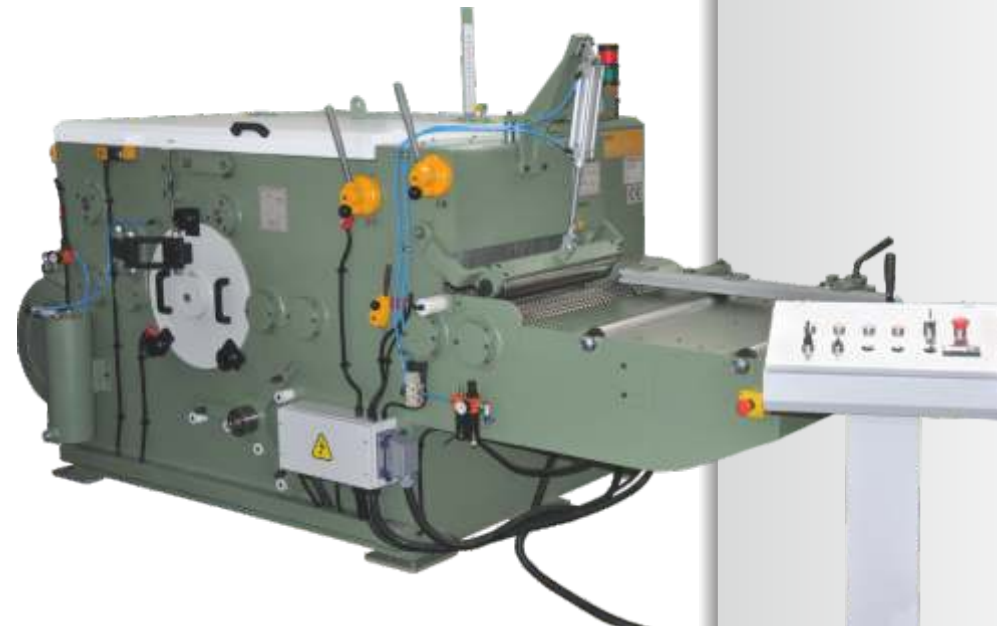
SLAB and BOARD RESAWING MACHINES

UYM 100 | UYM 120 | UYM 120/H



SINGLE SPINDLE MULTIPLE RIP SAWS WITH ROLLER

UDKM 120 | UDKM 160



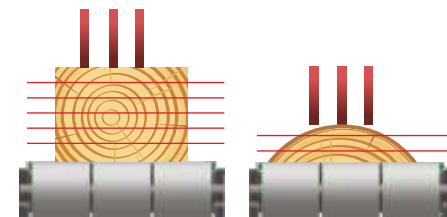
- Extra thick steel frame
- Special alloy hardened and grinded steel axe
- Upper and lower clawed tractive rollers are driven by hydraulic motor
- Hydraulic motor driven upper feeding rollers (adjustable height)
- Adjustable feed speed up to 0 - 65 m/min by hydromotor
- Safety metal covers and anti-kickback fingers
- Manual lubrication (optional - automatic)
- Pneumatic top pressing roller (UDKM 160)



- Extra thick steel frame, special alloy hard cast iron wheels
- Pneumatically tensioning system.
- An opportunity to increase up to 8-9 saws by upon requests.
- Availability of easy finding to cutting tools.
- The wider cutting width as 600 mm pallet feeding system (optional for UYYM 120)
- Electronic positioning system for thickness gauging and 6 memory buttons.
- Positioning system with PLC provides controlling all saws from 1 unit (optional)



HORIZONTAL BAND RE-SAWS / UYYM 100 | UYYM 120

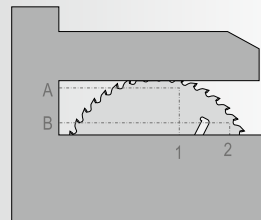




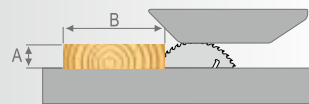
- Extra thick, strengthen steel frame prevents the vibration during in an operation
- Strong special axe and bearing system for plunks
- Quick and easy changing of the blades
- Automatic brake system
- Lineer system provides high efficiency and positioning
- Chipping canter chips the slabs on the logs then, an operator obtain a board directly from the log
- Due to start to cut the board directly, the capacity will be increase approximately 30 %

**SLAB CHIPPER / UDKCC 820 | UDKCC 550**

- According to customer requirement, pneumatic single or multiple crosscut machines with different automation solutions.



	A - 1	B - 2
UDKB/P - 18	100x250 mm	50x300 mm
UDKB/P - 24	200x200 mm	50x530 mm
UDKB/P - 30	240x240 mm	50x680 mm



	A	B	Min. Length	Max. Length
UDKIB	20 mm	160 mm	800 mm	6000 mm
UDKUB	20 mm	160 mm	800 mm	6000 mm
UDKDB-D	40 mm	240 mm	650 mm	5200 mm

CROSSCUT MACHINES / UDKB/P | UDKCB | UDKUB | UDKDB



- Comfortable, easy to use, operator friendly remote control
- Manufactured from 200 mm I-beams. Heavy and strong mainframe. (7700 upto 9500 kgs)
- Independent horizontal hooks movement for easier positioning of logs (optional)
- Fixed fence-horizontal movable hooks. The distance between fence and hooks can be adjusted do desired position min: 35-145 mm. As an optionally 15-145 mm
- 2 set of joysticks with six button each to control headblocks, hooks and turning arms and 1 set of hydraulic pedal for carriage forward backward movement (optional for advance models)
- Each of the hydraulic system centrifugal turning arm has 1000 kg lift capacity. Turning arms inclination up to 90°, rotation by electric motor
- Chains of turning devices are driven by reducer
- Log holding steel bars that protect the headblock guides getting damage by log and make the log to be turned easily
- Electronic thickness gauging system manufactured and designed by ÜSTÜNKARLI, has the possibility of remaining and outgoing thickness gauging, 8 memories and entering values directly, 50 programs for different diameter or width, optimization between 50 programs, possibility of instant programing manually and 5 different groups between 50 programs
- Automatic central lubrication



HYDRAULIC INCLINED LOG BAND SAWS / UTAZ

- Hydraulic feeding speed up to 0-85 m/min with steel rope drive system. Hydraustatic feeding system with the speeds of 0-120, 0-160, 0-200 m/min (optional)
- Special tensioning system that ensures lengthen life for steel rope
- Speed of headblocks is 0-200 mm/sec. provided by AC driven (0-320, 0-500 mm/sec. optional)
- Wheels of carriage are disguised into main body to prevent from the sawdust gathering on the rails, (273 mm trapeze / 260 mm flat)
- A special carriages for African Type Logs are produced upon request of customers



sales@ustunkarli.com

service@ustunkarli.com

ÜSTÜNKARLI

MARANGOZ MAKİNALARI İMALAT
SAN. ve TİC. LTD. ŞTİ.

Gölcükler Mah. 798/4 Sokak
No.1 Menderes, 35470
İZMİR / TÜRKİYE

Tel: +90 232 782 13 90
+90 232 782 22 68 - 69 - 70
Faks: +90 232 782 13 91

info@ustunkarli.com
www.ustunkarli.com

